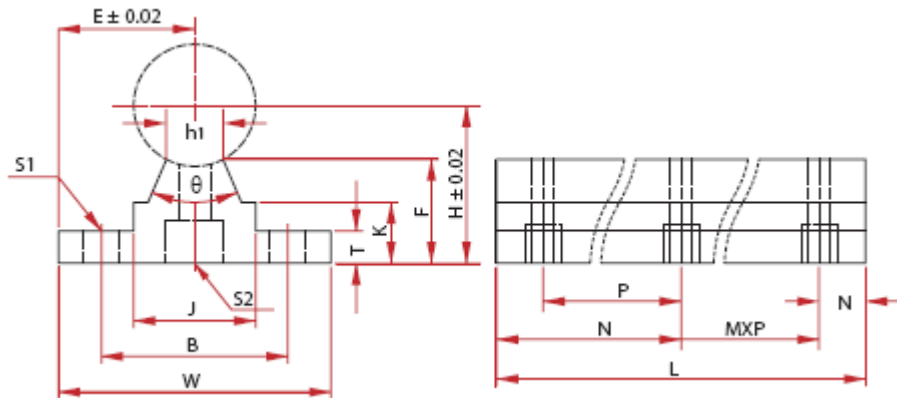


SA 軸心支持座



型號	軸心尺寸	主要尺寸										安裝尺寸					重量 (g)
		H	G	A	B	C	E	F	J	K	L	N	MXP	S	T	U	
SA16-200L	16	25	20	40	200	17.8	5	11.7	18.5	8	80°	25	1x150	30	5.5	M5	200
SA16-300L					300							75	1x150				300
SA16-400L					400							50	2x150				400
SA16-500L					500							25	3x150				500
SA16-600L					600							75	3x150				600
SA20-200L	20	27	22.5	45	200	17.7	5	10	19	8	50°	25	1x150	30	5.5	M6	200
SA20-300L					300							75	1x150				300
SA20-400L					400							50	2x150				400
SA20-500L					500							25	3x150				510
SA20-600L					600							75	3x150				610
SA25-300L	25	33	27.5	55	300	21	6	12	21.5	8	50°	50	1x200	35	6.5	M6	430
SA25-400L					400							100	1x200				580
SA25-500L					500							50	2x200				730
SA25-600L					600							100	2x200				880
SA30-300L	30	37	30	60	300	22.8	7	13	26.5	103	50°	50	1x200	40	6.5	M8	550
SA30-400L					400							100	1x200				730
SA30-500L					500							50	2x200				920
SA30-600L					600							100	2x200				1100
SA35-300L	35	43	32.5	65	300	26.5	8	15.5	28	13	50°	50	1x200	45	9	M8	700
SA35-400L					400							100	1x200				950
SA35-500L					500							50	2x200				1190
SA35-600L					600							100	2x200				1420