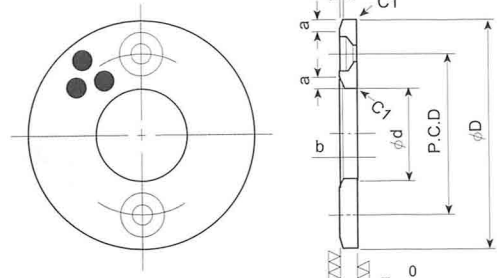


# 特殊銅合金系



自潤#500SP  
止推墊圈(SPW)



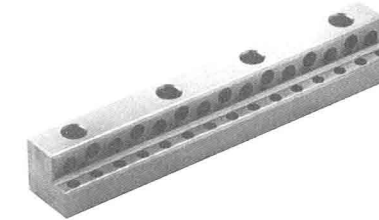
尺寸 (mm)		厚度T					公差 <sup>0</sup> <sub>-0.1</sub>			裝配孔		倒角	
內徑 φd	外徑 φD	3	5	7	8	10	P.C.D	個數	使用埋頭螺栓	a	b		
		SPW	SPW	SPW	SPW	SPW							
10.2	30	-1003					20	2	M3	1.5	0.3		
12.2	40	-1203					28	"	"	2	0.4		
12.2	40	-1203N							無埋頭螺栓孔	"	"		
13.2	40	-1303					28	2	M3	"	"		
14.2	40	-1403					"	"	"	"	"		
15.2	50	-1503					35	"	"	"	"		
16.2	50	-1603					"	"	"	"	"		
16.2	50	-1603N							無埋頭螺栓孔	"	"		
18.2	50	-1803					35	2	M3	"	"		
20.2	50	-2005					"	"	M5	2.5	"		
25.2	55	-2505					40	"	"	"	"		
30.2	60	-3005					45	"	"	"	"		
35.2	70	-3505					50	"	"	"	"		
40.2	80				-4007		60	"	M6	3	0.5		
45.2	90				-4507		70	"	"	"	"		
50.3	100				-5008		75	4	"	4	0.6		
55.3	110				-5508		85	"	"	"	"		
60.3	120				-6008		90	"	M8	5	0.8		
65.3	125				-6508		95	"	"	"	"		
70.3	130				-7010		100	"	"	"	"		
75.3	140				-7510		110	"	"	"	"		
80.3	150				-8010		120	"	"	"	"		
90.5	170				-9010		140	"	M10	"	"		
100.5	190				-10010		160	"	"	"	"		
120.5	200				-12010		175	"	"	"	"		

●請參考SPB組配。  
●可與SPB合併使用。

訂購型號

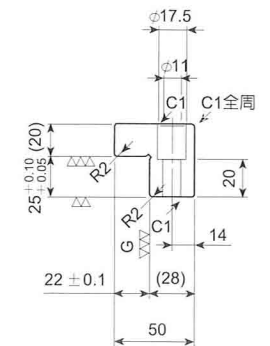
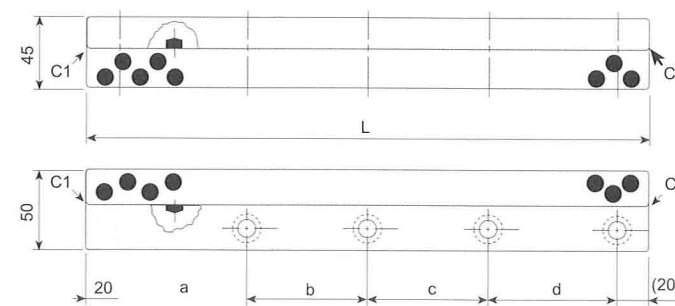
SPW-           
內徑 厚度

# 特殊銅合金系

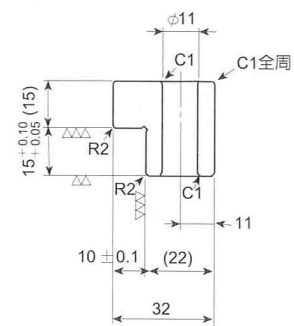
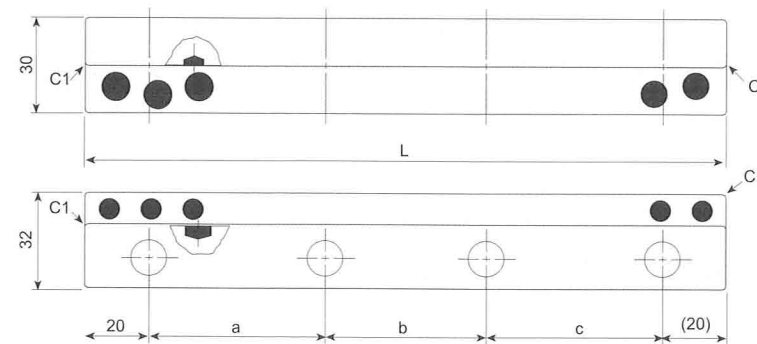


平面型自潤軸承  
L型耐磨板(SLP)(#500SP)

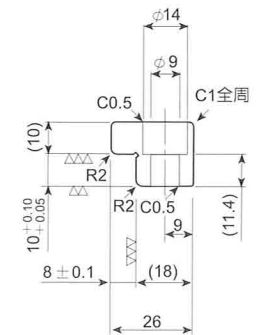
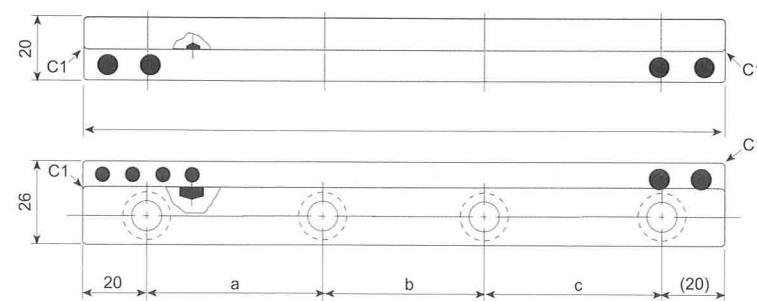
A型



B型



C型



型號	型狀	長度 L	裝配孔之孔距				裝配螺栓	
			a	b	c	d	螺栓規格	個數
SLP-26100C	C型	100	60				M8	2
SLP-26150C	"	150	55	55			"	3
SLP-26200C	"	200	55	50	55		"	4
SLP-32100B	B型	100	60				M10	2
SLP-32150B	"	150	55	55			"	3
SLP-32200B	"	200	55	50	55		"	4
SLP-32250B	"	250	70	70	70		"	4
SLP-50200A	A型	200	55	50	55		"	4
SLP-50250A	"	250	70	70	70		"	4
SLP-50300A	"	300	65	65	65	65	"	5
SLP-50350A	"	350	80	75	75	80	"	5